

REVISIONS	BY

NOT VALID FOR CONSTRUCTION
 UNLESS SIGNED & SEALED BY THE PROFESSIONAL ARCHITECT OR PROFESSIONAL ENGINEER
 DATE: 03-26-15

Date: 03-26-15
 Scale:
 Drawn:
 Job: 14-056
 Sheet:
A-3
 Of
 Sheets

Elevations Key Notes

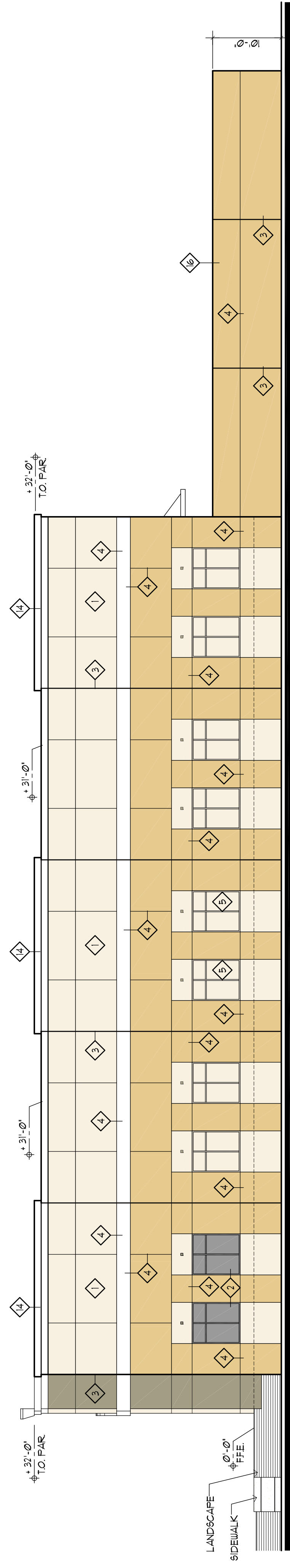
- 1 CONCRETE TILT-UP PANELS TO RECEIVE TEXT-COTE PAINT.
- 2 IMPACT RESISTANT WINDOWS ON CLEAR ANODIZED IMPACT RESISTANT ALUMINUM FRAMES.
- 3 3/4" PANEL JOINT
- 4 1 1/2" PANEL REVEAL
- 5 6'-0" X 7'-0" X 3/4" PANEL REVEAL SIMULATING WINDOW (PAINT ACCENT COLOR)
- 6 8"x8" DOWNSPOUTS PAINT TO MATCH BLDG.
- 7 PRE-ENGINEERED ALUMN CANOPY (WHITE).
- 8 9'-0" X 10'-0" ROLL-UP DOORS.
- 9 11'-0" X 14'-0" ROLL-UP TRUCK DOORS.
- 10 CONC. STAIR SEE SECT. ON SHT. A-15
- 11 RUBBER TRUCK DOOR BUMPERS (TYP. CP 2 PER DOOR.)
- 12 FORKLIFT CONC. RAMP
- 13 DECORATIVE FOAM CAP HOLDING
- 14 DECORATIVE MOLDING
- 15 DECORATIVE MOLDING
- 16 10' HT. PRIVACY SCREEN TILT-UP WALL.
- 17 31/32" GALV. STEEL GUIDES (TYPICAL) (PER DOOR)
- 18 6"x8" DOWNSPOUTS PAINT TO MATCH BLDG. SERIES COCK LEVELERS AS MFG BY SITE-HITE OR EQUAL. SUBMIT SHOP DRAWINGS.

Color Legend

- (A) BENJAMIN MOORE CC - 111 (SIMPLY WHITE)
- (B) BENJAMIN MOORE 2165 - 10 (BUTTER PECAN)
- (C) BENJAMIN MOORE 7142 - 40 (DIRT SAIGE)
- (D) BENJAMIN MOORE HC - 12 (CONCORD IVORY)

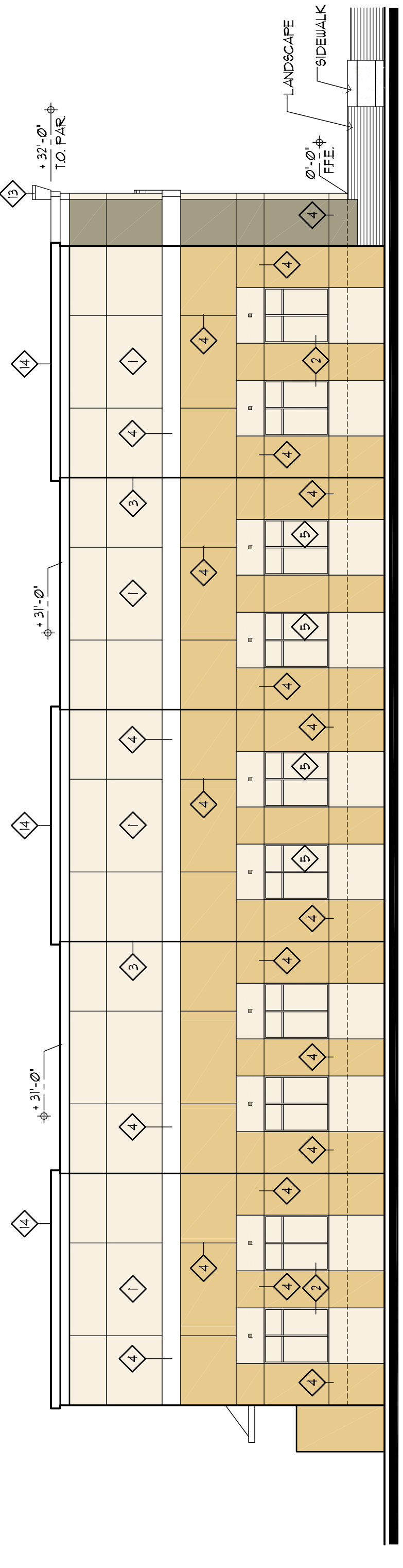
Proposed Front Elevation 3/32"

(WEST ELEVATION FOR BLDG 52)
 (EAST ELEVATION FOR BLDG 51)



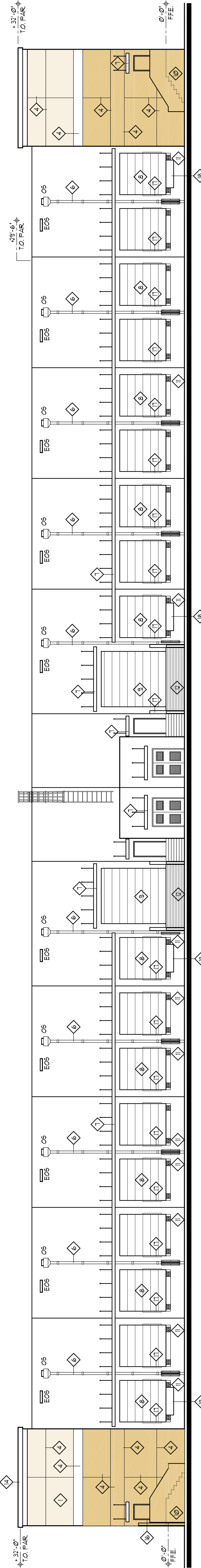
Proposed Right Side Elevation 3/32"

(SOUTH ELEVATION FOR BLDG 52)
 (SOUTH ELEVATION FOR BLDG 51)



Proposed Left Side Elevation 3/32"

(NORTH ELEVATION FOR BLDG 52)
 (NORTH ELEVATION FOR BLDG 51)



Proposed Rear Elevation 3/32"

(EAST ELEVATION FOR BLDG 52)
 (WEST ELEVATION FOR BLDG 51)

