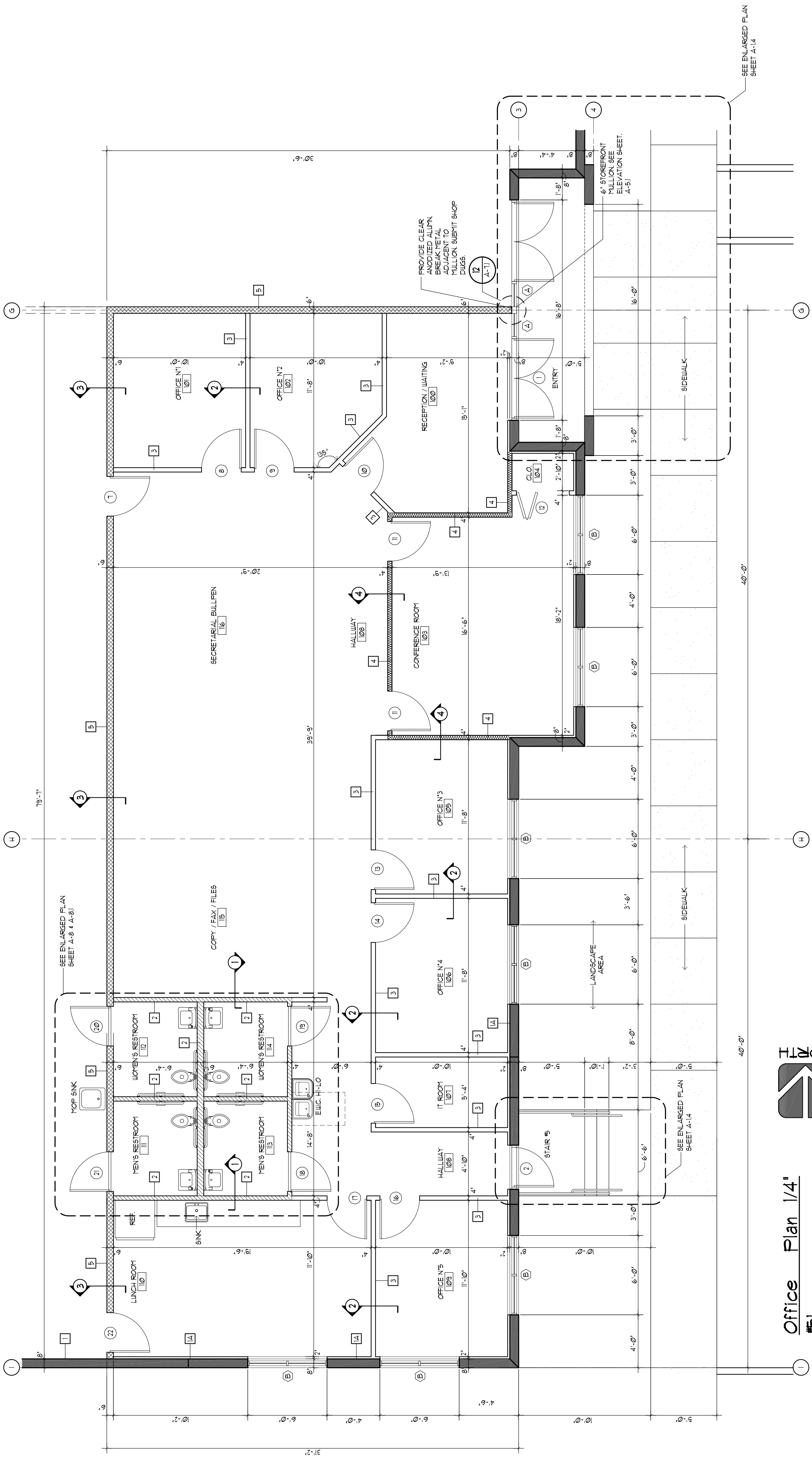


THE GRAHAM COMPANIES

REVISIONS	BY
08-14-15	

Date	4-8-15
Scale	
Drawn	
Job	14-056
Sheet	

A-2.1
 Of
 Sheets



Office Plan 1/4"
 #51

PLUMBING FIXTURES REQUIREMENTS
 BASED ON FLORIDA PLUMBING CODE 2010 - TABLE 403.1

FIXTURE	OFFICE AREA 2,604 SF, 24 PERSONS	WAREHOUSE AREA 1,161 SF, 16 PERSONS
WATER CLOSETS	12 PERSONS @ 1/25 = 50	8 PERSONS @ 1/100 = 80
LAVATORIES	12 PERSONS @ 1/140 = 50	8 PERSONS @ 1/140 = 50
WATER CLOSETS	12 PERSONS @ 1/25 = 50	8 PERSONS @ 1/100 = 80
LAVATORIES	12 PERSONS @ 1/140 = 50	8 PERSONS @ 1/140 = 50
DRINKING FOUNTAIN	140 PERSONS / 100	16 PERSONS / 100
SERVICE SINK		

TOTAL PLUMBING FIXTURES PROVIDED

MEN	2 WATER CLOSETS	2 LAVATORIES
WOMEN	2 WATER CLOSETS	3 LAVATORIES
DRINKING FOUNTAIN	1 DRINKING FOUNTAIN PROVIDED (H-ILO)	
SERVICE SINK	1 SERVICE SINK PROVIDED	

OCCUPANT CONTENT (DETAILED)
 BASED ON FLORIDA BUILDING CODE 2010 - TABLE 1004.1J

OFFICE AREA	2,604 SF @ 1/100 SF	24 PERSONS
WAREHOUSE AREA	1,161 SF @ 1/500 SF	16 PERSONS
TOTAL OCCUPANT LOAD		40 PERSONS

MINIMUM INTERIOR FINISH CLASSIFICATION

OCCUPANCY	SPRINKLERED			UNSPRINKLERED		
	EXITS	CORRIDORS	OTHER SPACES	EXITS	CORRIDORS	OTHER SPACES
B	B	C	C	A	B	C
5	C	C	C	B	B	C

WALL LEGEND

TYPE	SECTION	DESCRIPTION	FIRE RATING	UL NUMBER	REMARKS
1	[Symbol]	CONCRETE TILT-UP PANELS SUBMIT SHOP DUGS	N/A	N/A	
1A	[Symbol]	CONCRETE TILT-UP PANELS W/ 1/2" DRYWALL COVER 1/4" METAL STUDS & 2" O.C. PROVIDE R-14 POLY FOIL FACE INSULATION	N/A	N/A	
2	[Symbol]	NON-RATED PARTITION CONSISTING OF 1/2" DRYWALL MOISTURE RESISTANT BOTH SIDES OVER 3/8" 2B GA. CHANNEL-SHAPED STUDS @ 16" O.C. PROVIDE R-II BATT INSULATION TO 3'-6" AFF.	N/A	N/A	EXTEND STUDS 4 DRYWALL 6" ABOVE CEILING. PROVIDE R-II BATT INSULATION TO 3'-6" AFF.
3	[Symbol]	NON-RATED PARTITION CONSISTING OF 1/2" DRYWALL BOTH SIDES OVER 3/8" 2B GA. CHANNEL-SHAPED STUDS @ 16" O.C.	N/A	N/A	EXTEND STUDS 4 DRYWALL 6" ABOVE CEILING
4	[Symbol]	NON-RATED PARTITION CONSISTING OF 1/2" DRYWALL BOTH SIDES OVER 3/8" 2B GA. CHANNEL-SHAPED STUDS @ 16" O.C.	N/A	N/A	PROVIDE R-II FIBERGLASS INSULATION
5	[Symbol]	ONE HR FIRE RATED DRYWALL PARTITION CONSISTING OF 6" 1/2" GA. CHANNEL-SHAPED STUDS @ 16" O.C. W/ 1 LAYER OF 1/2" TYPE 'X' DRYWALL EACH SIDE (UL 459)	1 HR	UL 459	PROVIDE R-II FIBERGLASS INSULATION. EXTEND WALLS UP TO BOTTOM OF ROOF DECK



Office Plan 1/4"
 #51